

Trading equities on NanoTrader



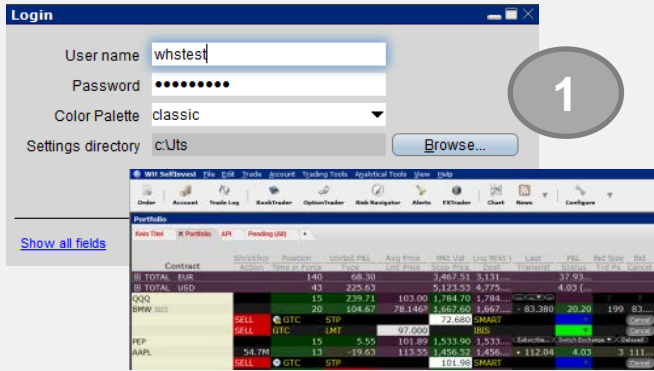
- Launching NanoTrader
- Managing folders / Opening charts
- Creating files/ Adding equities
- Looking up contract information
- Subscribing to marketdata
- Consulting a Live account

Version Febr. 2017

- Launching TWS and binding with NanoTrader
- Managing folders / Opening charts
- Adding folders / Adding equities
- Looking up contract information
 - Equities
 - Certificates
- Subscribing to market data
- Consulting the Live account information

Risk notice:

CFDs, Forex, Futures and equities are subject to price fluctuations. Financial securities with leverage hold a particular risk in the sense that using leverage can cause losses greater than the value of the account.



To trade equities with WHS you need two different platforms. Download them here:

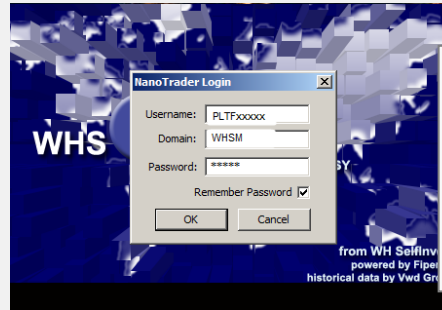
[TWS](#), [NanoTrader](#)

Once both platforms are installed:

First launch TWS (Trader Workstation), log in and minimize the window.

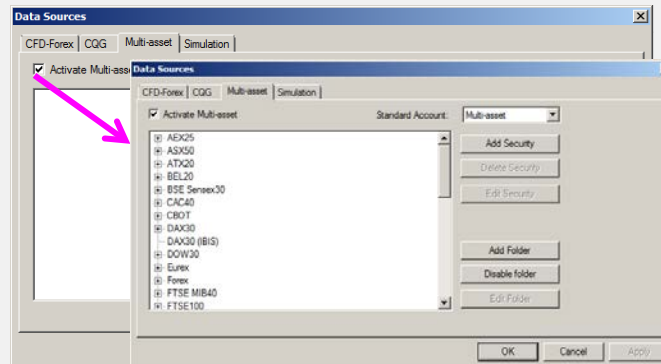
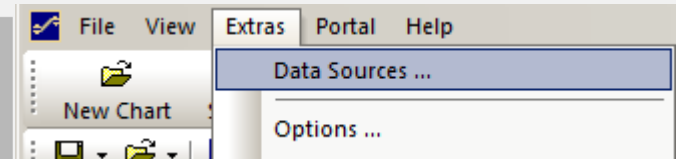
TWS has to run in the background in order to receive the quotes and order information for NanoTrader.

Click on this symbol to watch a video on the login-procedure

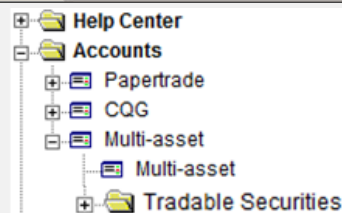


The second step is to open NanoTrader using the PLTFXXXX- username first and then the account login credentials.

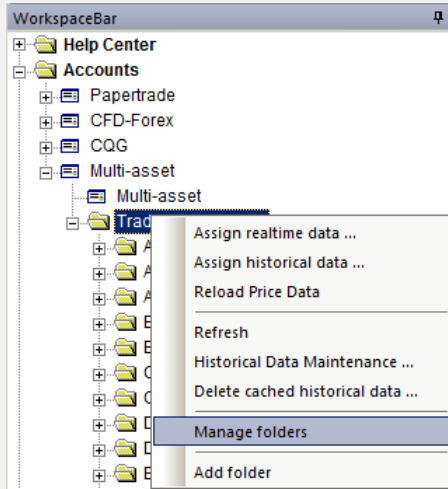
When NanoTrader is launched, go to *Extras > Data Sources*



Go to the tab „Multi-asset“ and check the box *Activate Multi-asset*. Next you will see a list of preconfigured folders and charts. Confirm OK.

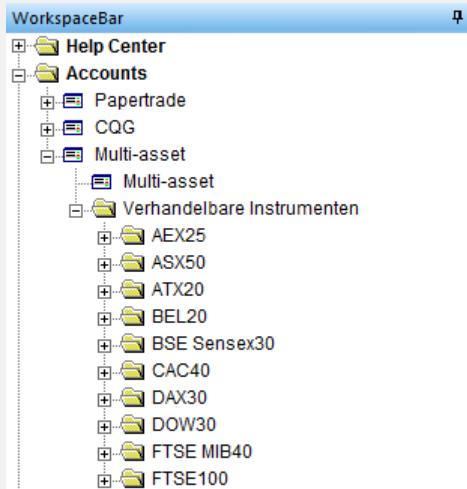
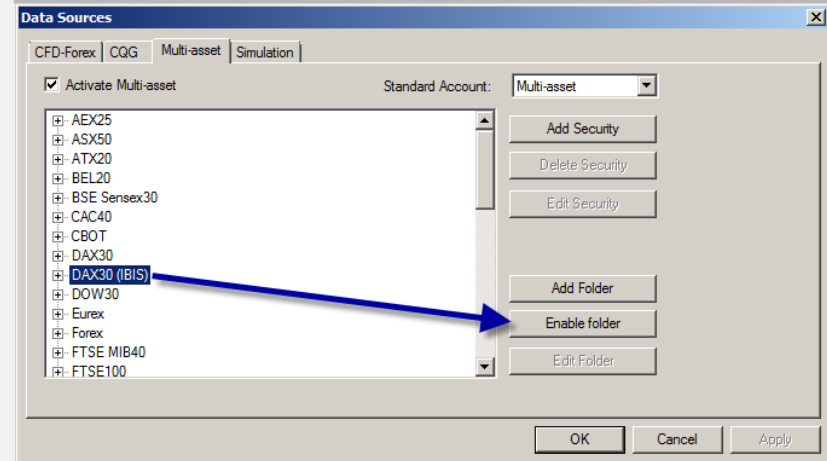


All enabled folders* will be shown in the WorkspaceBar under „Multi-asset“ and “Tradable securities” with the “+” sign.



Open the Workspacebar, to Accounts, Multi-asset and do a right click on *Tradable securities*. Select *Manage folders*.

Select the folder you wish to «see» or «hide» in the Workspacebar. Confirm by using the button *Enable folder* of *Disable folder*.



Next you will see in the Workspacebar under “*Tradable securities*” all enabled folders.

In this example on the leftside, one of the activated folders is DAX30 (IBIS), which includes a subscription for the real-time data from Xetra for DAX30. **

Please also read chapter “[Subscribing to market data](#)”.

*Delayed data from TWS version 963,1. are included in NanoTrader. In case of further questions, please contact the WH Selfinvest customer service

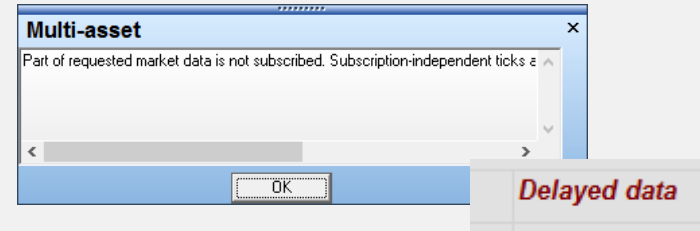
** **Important:** If you have access to a Live subscription for quotes, it is important to lock the folder with the name for the free data. This is to prevent conflicts when loading chart data.



When you open a folder, a list of preconfigured studies (charts) or previously set studies is shown.

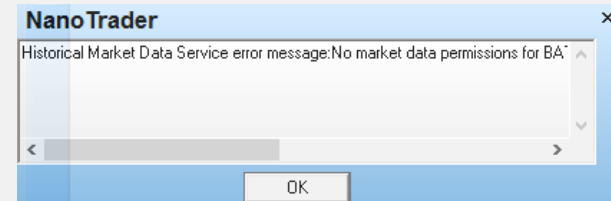
If you already have a subscription on the exchange, you can open a chart with a double-click with the Live data and historical data.*

If you open a delayed chart**, a pop-up will show the following message in the chart. Starting with the next incoming live tick a chart will be built.

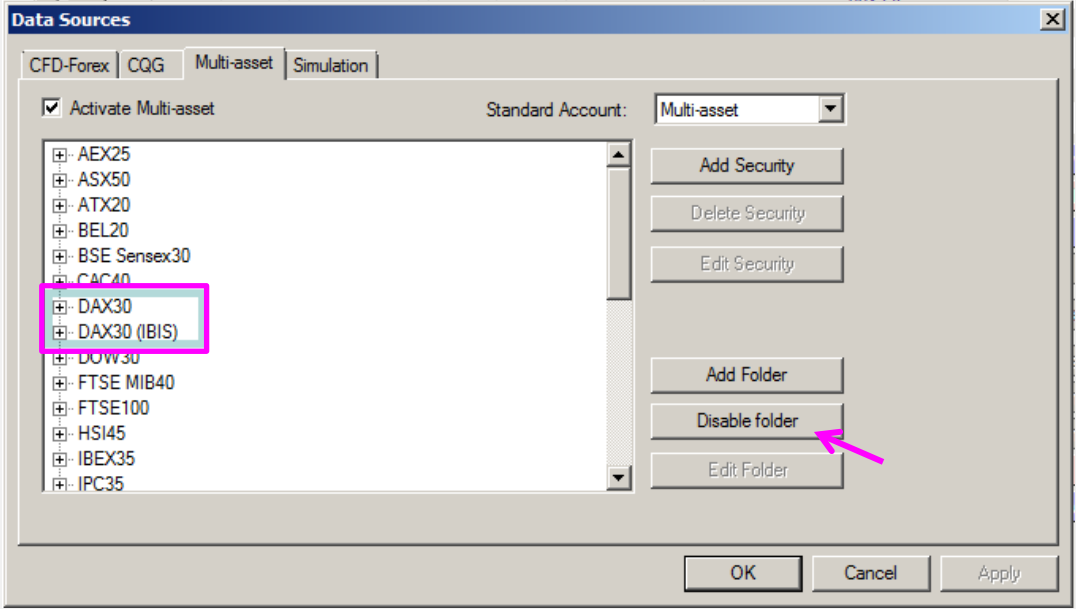


Delayed data

As soon as you open a chart that is not free of charge or delayed, the chart will remain empty and a pop-up message will be shown like the one on the right.

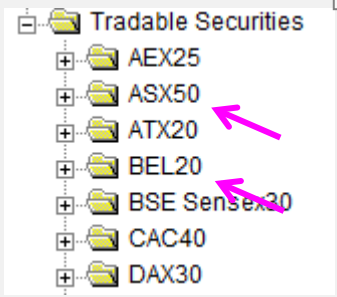


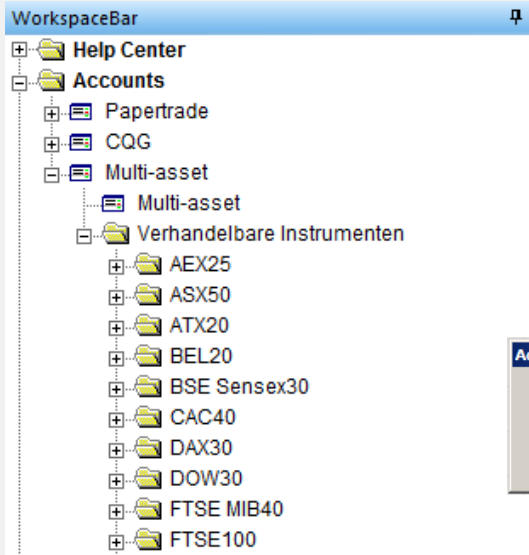
***Important:** If you have access to a Live subscription for quotes, it is important to lock the folder with the name for the free data. This to prevent conflicts when loading chart data.
 ** 20 minutes delayed data from TWS version 963,1. are included in NanoTrader. In case of further questions, please contact the WH Selfinvest customer service.



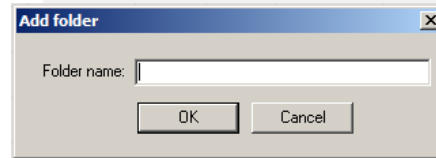
In some cases you will find two different preconfigured folders for the same index. This can be the case for in particular indices for which their stocks are traded on Xetra as well as on a Swiss exchange. Make sure to only have one folder open at the same time. The folder with Live subscription carries the name of the exchange e.g. DAX30 (IBIS). The folder with delayed quotes does not have a reference to the exchange.

In the list *Tradable securities* there can only be 1 folder per index active at the same time.

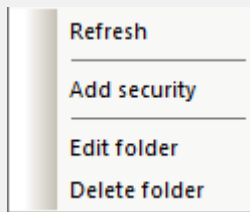




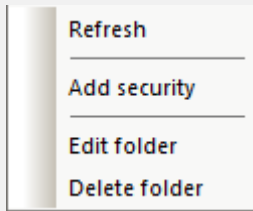
To change the appearance of a preconfigured folder or chart, right-click inside the Workspacebar on *Tradable securities* and next *Add folder*.



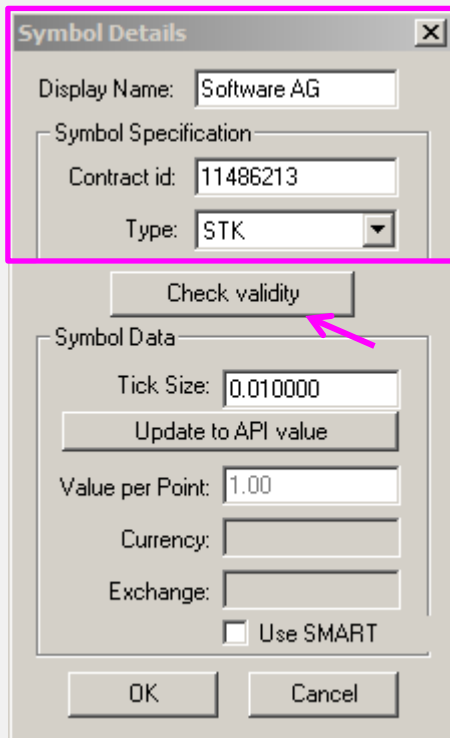
A dialog window will open and the name of the new folder can be entered under « Tradable Securities ». Once this is done, the new folder can be found in the same list of folders as explained before.



New equities can be added to the folder by doing right-click and *Add security*.



As explained below, please click on « Add an instrument » to add an instrument to an existing folder or right-click to add it to a new folder. Confirm by clicking *Add security*.



A dialog-window named „Symbol Details“ will open.

1) Under „Screen-name“ you can enter a name for the instrument, for example « Software AG ».

2) Under „Symbol-Specifications“ the so-called „Contract ID“ (Conid) must be entered. (If you don't know the Conid, you can always retrieve it via *Contract search*. See chapter *Finding contract information*“.)

3) In the field « Type* » chose *STK* for Stocks.

After having filled out the three fields, click on *Check validity* to find the exchange/market of that instrument.

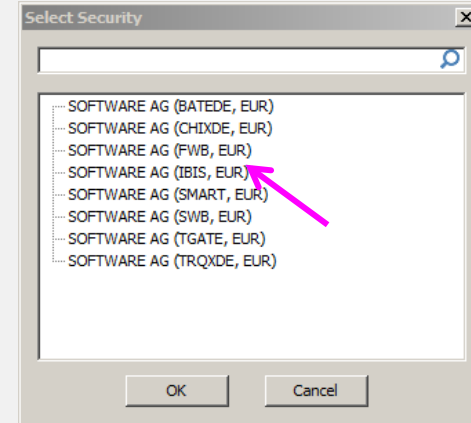
* For other Instruments, other values need to be entered. e.g. for Certificates:

- Cash = Cash Indices
- CFD = CFD
- FUT = Futures
- **IOPT = Certificates**
- IND = Indices
- OPT = Options
- STK = Stocks
- WAR = Warrants

After having checked the validity, an window will open asking to select an instrument.

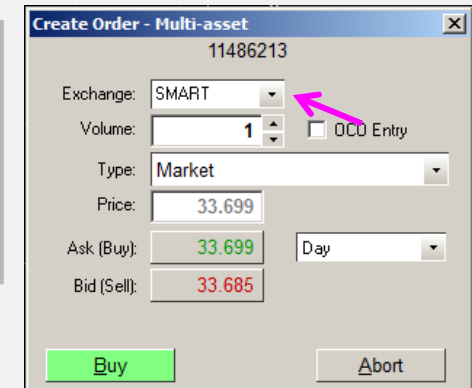
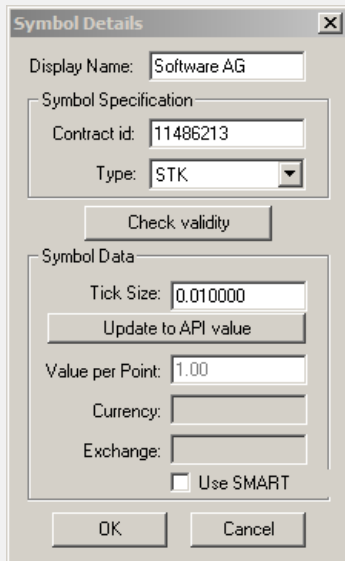
If you have a Live data subscription, choose for the main exchange e.g. **IBIS** for Software AG.

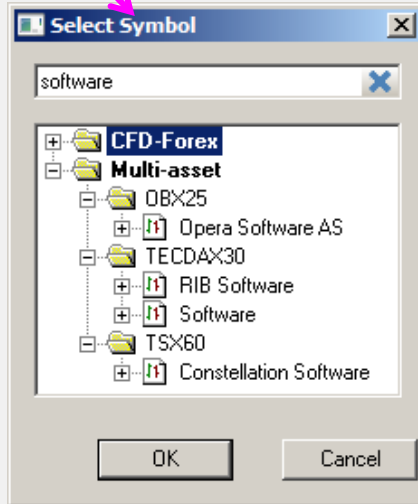
No subscription? Just choose **SMART** and click OK.



After this selection, the data under „Symbol-Details“ shall update.

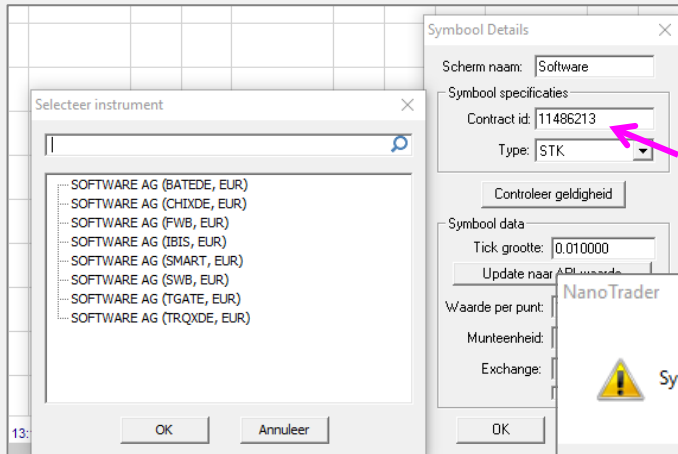
An example of how the order ticket selects SMART as exchange.
 SMART assures that your order is being routed to the exchange offering the best quote at that particular moment.



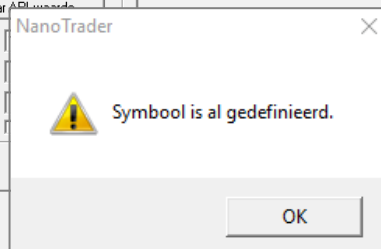


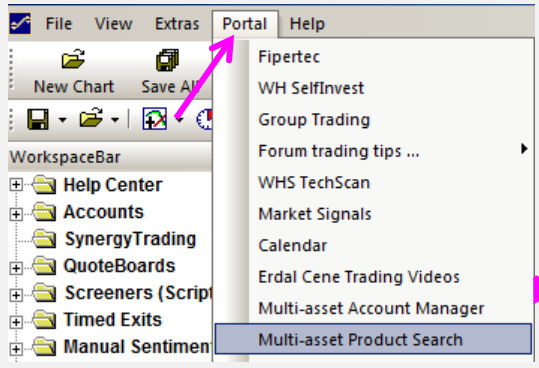
Check via *New chart* and in the window „Select strategy“ if the instrument is already inside the „Multi-asset“ structure. Enter a keyword in the search pane.

If the instrument is already available, it cannot be added a second time.



If you add a symbol that is already available under the *Tradable Securities*, an error message will pop up.

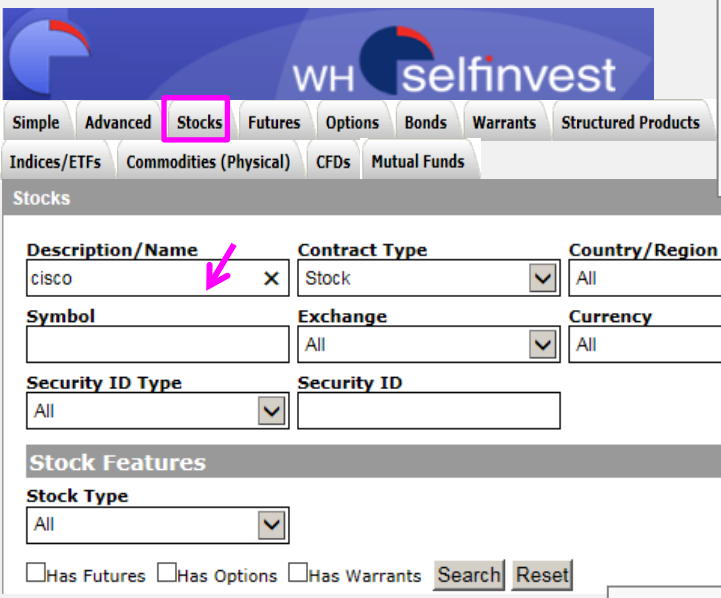




On the website of WH SelfInvest or in NanoTrader's Portal you can look up product information.

The page will show you all details on the different stocks, warrants, options, certificates etc. ...

Most important for the visulisation of chart is the Contract-ID or so-called conid.



Several different tabs can be selected.

Click for example on *Stocks*. In the description/Name, just enter the name of the stock en click *Search*.

It is not necessary to fill out all the fields.

Search form for equities with fields for:

- Description/Name: cisco
- Contract Type: Stock
- Country/Region: All
- Symbol: (empty)
- Exchange: All
- Currency: All
- Security ID Type: All
- Security ID: (empty)
- Stock Type: All

Buttons: Has Futures, Has Options, Has Warrants, Search, Reset

1 to 3 out of 3 | 1

Description/Name	Type	Symbol	Exchange	Stock Type	ClsPrc	Current
Cisco Systems Inc (CSCO@NASDAQ)	Contract for Difference (CFD)(1), Futures(4), Option (740), Stock(5), Warrants(922), Structured Product (1044)					
Details	CISCO SYSTEMS INC	Stock	CSCO	AEB	Common	31.24 USD
Details	CISCO SYSTEMS INC	Stock	CIS	IBIS	Common	29.05 EUR
Details	CISCO SYSTEMS INC	Stock	CSCO	MEXI	Common	639.61 MXN
Details	CISCO SYSTEMS INC	Stock	CSCO	NASDAQ	Common	31.32 USD
Details	CISCO SYSTEMS INC	Stock	4333	SEHK	Common	60.00 HKD
First Republic Bank/CA (FRC@NYSE)	Contract for Difference (CFD)(1), Futures(4), Option (1044)					

Click on *Detail* to so more concrete information.

Columns 4 and 5 show more specific information on the exchange and the type instrument.

Specifications

Underlying Information

Description/Name: [Cisco Systems Inc \(CSCO@NASDAQ\)](#)

Contract Information

Description/Name: CISCO SYSTEMS INC
 Symbol: CSCO
 Exchange: [NASDAQ](#), [ARCA](#), [BATS](#), [BEX](#), [BYX](#), [CBOE](#), [CHX](#), [CVGXALGO](#), [DRCTEDGE](#), [EDGEA](#), [ISLAND](#), [NMS](#), [NSX](#), [PSX](#)
 Contract Type: Stock
 Country/Region: United States
 Closing Price: 31.32
 Currency: U.S. Dollar (USD)

Contract Identifiers

Conid: 268084
 ASSETID: 1B43506
 ISIN: US17275R1023

Stock Features

Stock Type: Common

Margin Requirements?

Initial Margin: Default
 Maintenance Margin: Default
 Short Margin: Default

NYSE Arca (ARCA) Top

Local Name: CSCO
 Local Class: NMS
 Settlement Method:
 Exchange Website: <http://www.nyse.com/productservices/nysearcaequities/1156241406908.html>
 Trading Hours:

Sun	Mon	Tue	Wed	Thu	Fri	Sat
00:00-00:00	04:00-20:00	04:00-20:00	04:00-20:00	04:00-20:00	04:00-20:00	00:00-00:00

Regular Trading Hours

Sun	Mon	Tue	Wed	Thu	Fri	Sat
00:00-00:00	09:30-16:00	09:30-16:00	09:30-16:00	09:30-16:00	09:30-16:00	00:00-00:00

Price Parameters

Range	Increment
-------	-----------

The following page will open when clicking on Details.

Most important is the Contract-ID (Conid) as this number is the reference for many operations inside NanoTrader. Here for example 12178242, the number we can use to add the contract.

How to add a contract via it's Conid, is explained in the chapter „[Adding folders / Adding equities](#)“.

Boerse Stuttgart
DIE PRIVATANLEGERBÖRSE

STOCK EXCHANGE COMPANY MYEXCHANGE

SECURITIES & MARKETS NEWS TOOLS & SERVICES SEGMENTS & INITIATIVES

EQUITIES INVESTMENT PRODUCTS LEVERAGE PRODUCTS BONDS

- Reverse Convertibles
- Discount Certificates
- Warrants
- Knock-out Products
- Corporate Bonds
- Federal Bonds

To look up the Conid of certificates we advise to have a look on the website of the exchange on which the certificate is listed.

For example the certificate DAX Performance Index listed on the Stuttgart exchange. Their Knock-Out-Finder is ideal for this kind of searches.

(www.boerse-stuttgart.de)

KNOCK-OUT FINDER

WKN/name/SIN:

Type of underlying: Index

Country/region underlying: Germany

Underlying: DAX Performance-Index

Option type: All

DELETE ENTRY SEARCH

Just enter the data you know about the certificate you are looking for and click *Search*. The first column of the list shows the WKN.

WKN	Issuer's product ref.	Bid	Ask	Type	Underlying	Strike price	KO barrier	Maturity	OV	Issuer
CX8PWB	DAX Open End Turbo Bull	2,49	2,50	CALL	DAX	10.247,9679	10.247,9679	endlos	0,01	Citi
TD73K8	Open End-Turbo-Optionsschein	2,22	2,62	CALL	DAX	10.246,4546	10.246,4546	endlos	0,01	HSBC

File View Extras Portal Help

New Chart Save All

WorkspaceBar

- Help Center
- Accounts
- SynergyTrading
- QuoteBoards
- Screeners (Script)
- Timed Exits
- Manual Sentimen

Structured Product

Description/Name:

Contract Type: Structured Product

Symbol: CX8PWB

Exchange: All

Has Futures Has Options Has Warrants Search Reset

Using the WKN the contract can be tracked via « Search Product » in NanoTrader. On the search page, choose the category *Structured Products*.

As Symbol enter the WKN of the certificate and click *Search*.

Description/Name	Type	Symbol	Exchange	ClsPrc	Currency
DAX 30 Index (Deutsche Aktien Xchange 30) (DAX@)	Futures(6), Indices/ETFs(1), Option(2156), Warrants (51959)				
Details	CitiWarrants 10304.0622 C				
	Issuer Name: CitiWarrants				

Specifications	
Underlying Information	
Description/Name	DAX 30 Index (Deutsche Aktien Xchange 30) (DAX@)
Contract Information	
Description/Name	CitiWarrants
Symbol	CX8PWB
Exchange	FWB , SWB
Contract Type	Structured Product
Country/Region	Germany
Closing Price	13.77
Currency	Euro (EUR)
Contract Identifiers	
Conid	255914532
ISIN	DE000CX8PWB1
WKN	CX8PWB
IOPT Features	
Type Name	DAX Open End Turbo Bull
Issuer Name	CitiWarrants
Short Name	
Issue Date	21/11/2016
Expiration Date	-
Last Trading Date	-
Strike	10304.0622
Strike Currency	EUR
Right	Call
Multiplier	0.01
Exercise Style	[]
Rebate Present	No

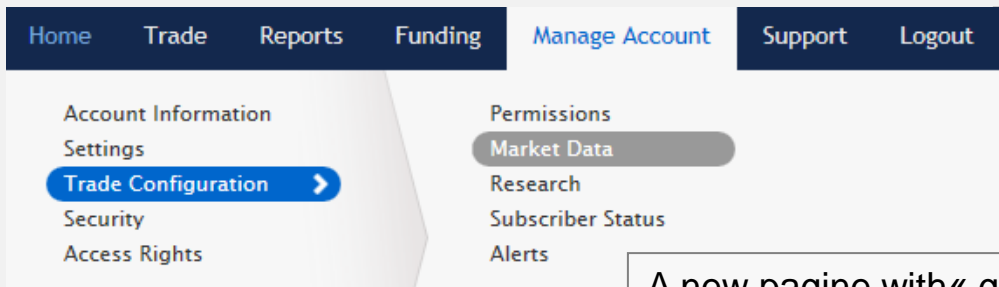
After having clicked on *Details* a page will open, showing all of the most relevant information and details on the instrument.

Under Contract Identifier, you find the contract's unique conid, « 255914532 ».

The conid will be used as reference to add the instrument to your NanoTrader.

How to add an instrument using the conid, is explained in the chapter „[Adding folders / Adding equities](#)“.

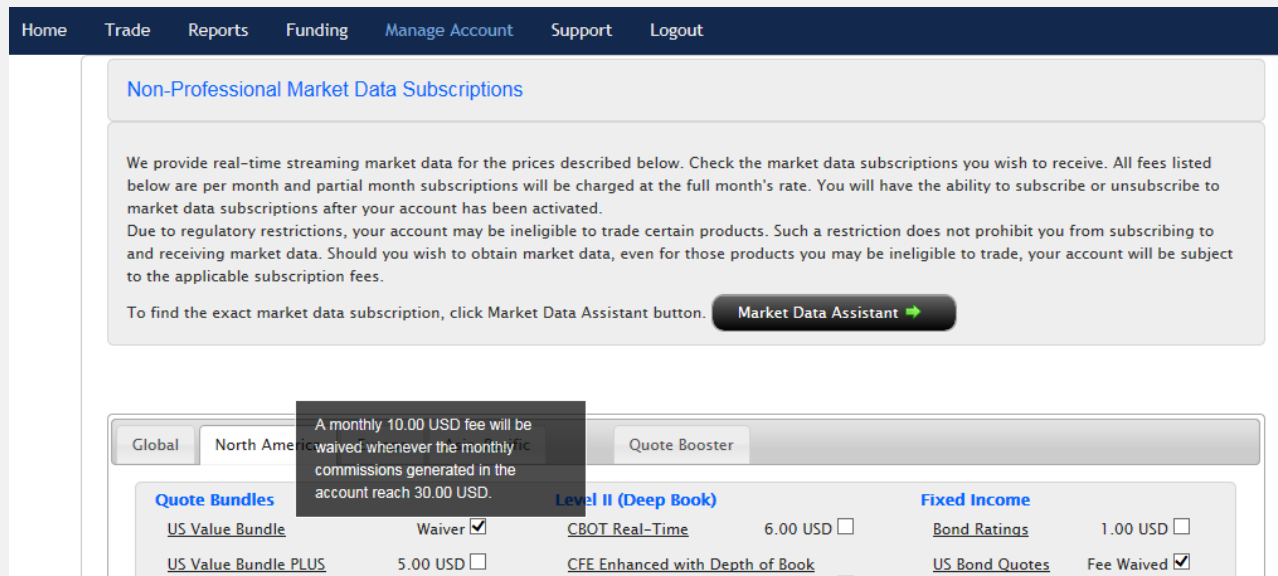
“



Open the Account Manager and choose *Manage Account*. Then go to *Trade Configuration* and to *Market Data*.

A new page with « geographical » structure is opened to enable subscription to the different marketdata. click on a tab, e.g. North-America.

Via a mouse-over you see extra information on the different available data packages. Select the desired package and click *Continue* to proceed. Some more windows will follow before finally subscribing.



* Please mind that WHS has put a default set of permissions for the different types of instruments available on your account. If you wish to change or add permissions, go to the menu « Permissions » and make the desired changes.

Home Trade Reports Funding Manage Account Support Logout

Non-Professional Market Data Subscriptions

We provide real-time streaming market data for the prices described below. Check the market data subscriptions you wish to receive. All fees listed below are per month and partial month subscriptions will be charged at the full month's rate. You will have the ability to subscribe or unsubscribe to market data subscriptions after your account has been activated.

Due to regulatory restrictions, your account may be ineligible to trade certain products. Such a restriction does not prohibit you from subscribing to and receiving market data. Should you wish to obtain market data, even for those products you may be ineligible to trade, your account will be subject to the applicable subscription fees.

To find the exact market data subscription, click Market Data Assistant button. [Market Data Assistant](#)

Global North America Quote Booster

Quote Bundles

US Value Bundle	Waiver <input checked="" type="checkbox"/>	Level II (Deep Book)	CBOT Real-Time	6.00 USD <input type="checkbox"/>	Fixed Income	Bond Ratings	1.00 USD <input type="checkbox"/>
US Value Bundle PLUS	5.00 USD <input type="checkbox"/>		CFE Enhanced with Depth of Book			US Bond Quotes	Fee Waived <input checked="" type="checkbox"/>

A monthly 10.00 USD fee will be waived whenever the monthly commissions generated in the account reach 30.00 USD.

Once validated, the new data will be available immediately. The relevant fees will be charged automatically on the trading account on a monthly basis.

Date	Description	Amount
Other Fees		
EUR		
2017-01-04	German ETF's and Indices Level I Non-Professional for Dec 2016	-1.25
2017-01-04	NASDAQ Level I for Dec 2016	-1.43
2017-01-04	NYSE Level I for Dec 2016	-1.43
2017-01-04	SPOT MARKET GERMANY (FRANKFURT/XETRA)(N FOR DEC 2016	-16.25

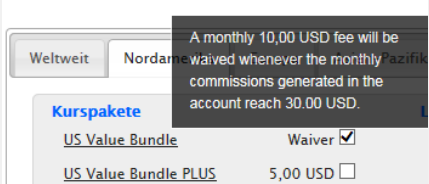
Fees are debited each month and are charged retroactively on the subscriptions during the previous month.

All charges are list in a transparent way in the account statements.

- Global
- North America
- Europe
- Asia-Pacific

US-Markt

One of the most interesting subscriptions is the **US Value Bundle**. This one includes all US exchanges with Level I data (Best BID/Best Ask). This for only 10 USD which are reimbursed if you reach to 30 USD commissions during the same month.



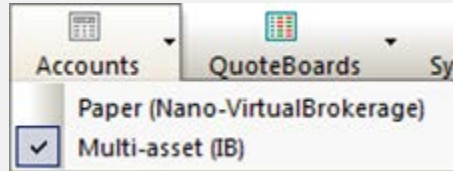
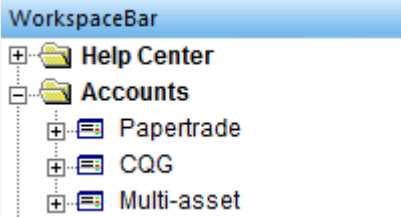
Other possibilities are **AMEX**, **NYSE** or **NASDAQ**. These ones do not offer any discounts.

<u>AMEX (Network B/CTA)</u>	1,50 USD	<input checked="" type="checkbox"/>
<u>CBOT Real-Time</u>	1,25 USD	<input type="checkbox"/>
<u>CFE Enhanced</u>	2,50 USD	<input type="checkbox"/>
<u>CME Real-Time</u>	1,25 USD	<input type="checkbox"/>
<u>COMEX Real-Time</u>	1,25 USD	<input type="checkbox"/>
<u>Canadian Exchange Group (TSX/TSXV)</u>	20,00 CAD	<input type="checkbox"/>
<u>Mexican Derivatives</u>	5,00 USD	<input type="checkbox"/>
<u>Mexican Stock Exchange</u>	13,00 USD	<input type="checkbox"/>
<u>Montreal Derivatives</u>	6,00 USD	<input type="checkbox"/>
<u>NASDAQ (Network C/UTP)</u>	1,50 USD	<input checked="" type="checkbox"/>
<u>NYMEX Real-Time</u>	1,25 USD	<input type="checkbox"/>
<u>NYSE (Network A/CTA)</u>	1,50 USD	<input checked="" type="checkbox"/>

EU-Markt

For European equity, warrants and turbo's the following choices are available.

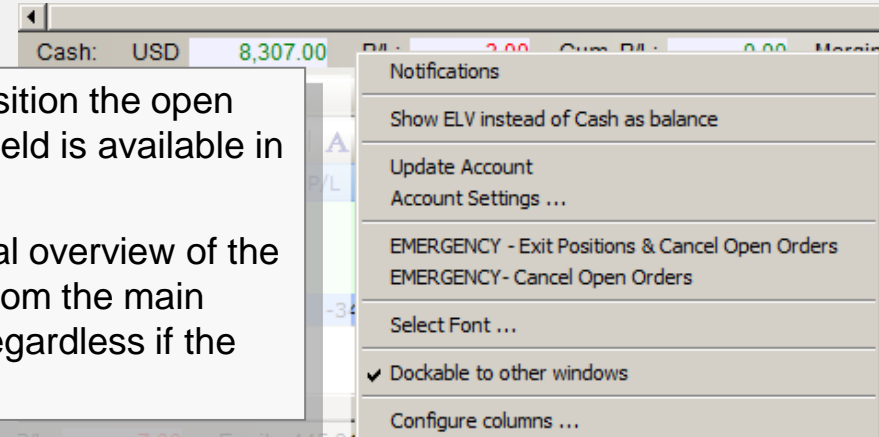
<u>Spot Market Germany (Frankfurt/Xetra)</u>	16,25 EUR	<input checked="" type="checkbox"/>
<u>Stuttgart Boerse incl. Euwax (SWB)</u>	4,50 EUR	<input checked="" type="checkbox"/>



Your account can be accessed in a variety of ways inside NanoTrader. For example via « Accounts » or via Multi-Asset in the Workspacebar. Just bear in mind that the account number itself will not be shown, only « Multi-asset ».

In the accountbar you see for every individual market position the open profit/loss and if the instrument on which the position is held is available in the Workspacebar.*

De short overview in the footer of the account is a general overview of the accounts situation. This information is received directly from the main interface and represents the sum of all open positions, regardless if the instrument(s) is available in the Workspacebar or not.



By doing a rightclick on the equitybar you get a text-menu.

Show ELV instead of Cash as balance Here you can toggle between cash values of your account or the Equity with Loan Value.

(These correspond with the data in the account window inside TWS)

Cash:	EUR	3,723.00
ELV:	EUR	8,149.19

* If a contract is included inside TWS and not added to the NanoTrader, than you will receive a message while opening the NanoTrader. The message includes the Conid to simplify its addition to the NanoTrader.